



## **INTEGRATED SERVICES**

Mixed Use Fully Finished Building in  
NEW CAPITAL

# ABOUT



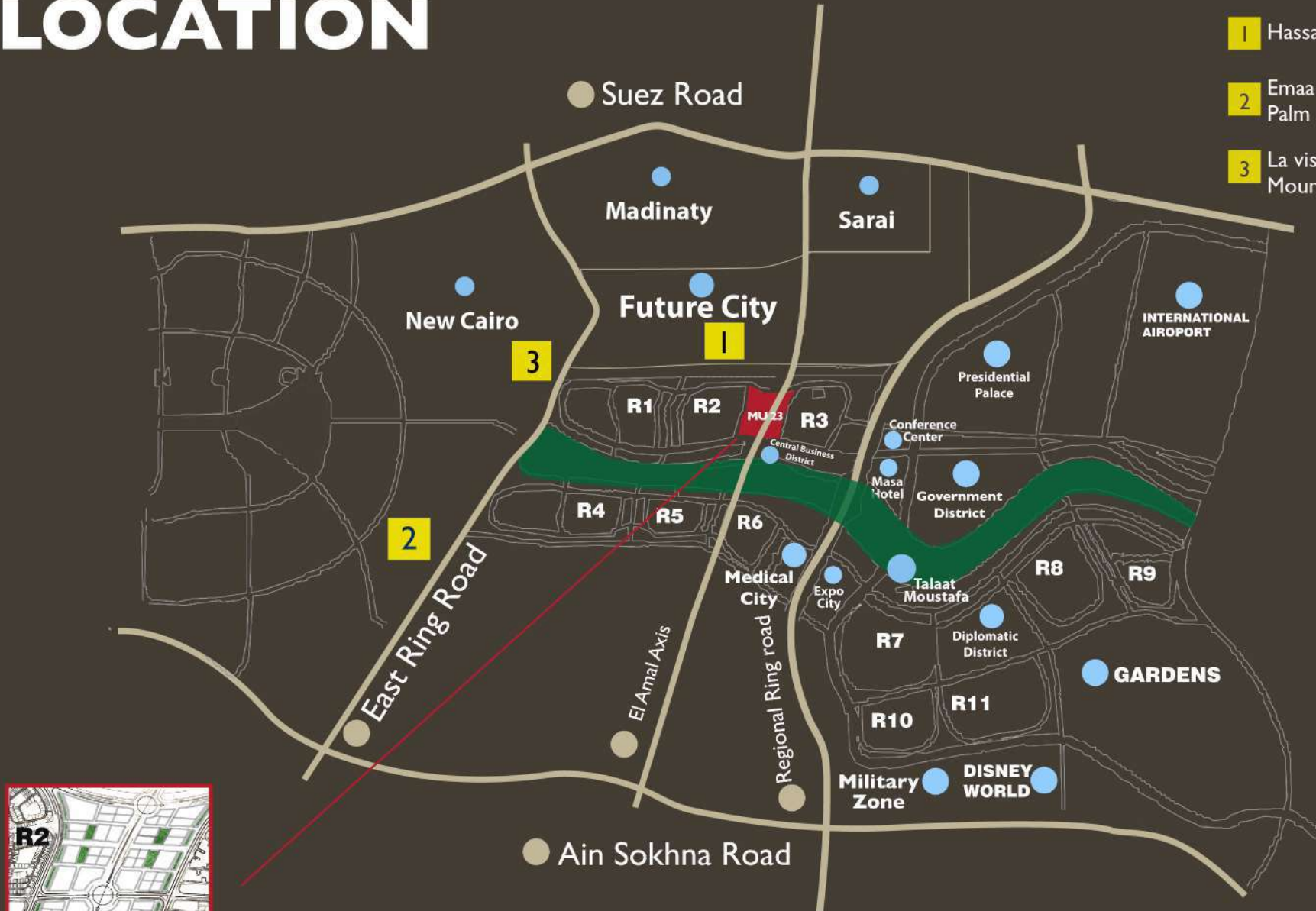
Ivory Plaza is a mixed use fully finished building, Built over **20,000 m<sup>2</sup>** to provide a wide range of facilities to serve a surrounding population of **200,000** person, The building contains commercial shops , cafes , restaurants, administrative offices , medical clinics as well as Serviced Apartments , All under an impressive roof top view with a sky lounge , spa & gym.

The building also offers a conference hall space and a variety of meeting rooms for business needs.

# LOCATION

## Surrounding Projects

- 1** Hassan Allam- Tatweer Misr- Sabbour
- 2** Emaar- Hyde Park- Sodic-Lake View- Palm Hills-Sabbour-Mountain View
- 3** La vista-Marassem-Dorra-Palm Hills-Mountain View



**IVORY PLAZA**

- 8 MINUTES FROM NEW CAIRO
- 5 MINUTES FROM SUEZ ROAD
- 8 MINUTES FROM SOKHNA ROAD
- SERVING A POPULATION OF MORE THAN 200,000
- OVERLOOKING THE MAIN ROAD WHICH IS CROSSING THE WHOLE NEW CAPITAL (AL AMAL AXIS)
- BETWEEN R2 AND R3 ZONE WHICH IS ALREADY BUILT AND SOLD OUT

# FACILITIES



- Business Center



- Mini spa & gym



- Conference Room



- Underground Parking (355 slots)



- Business Lounge



- High speed internet



- Solar Cells



- Fire Fighting System



- Electricity Generator



- Central AC/s (VRV System or Equivalent)



- Security & Surveillance System



- Sky Lounge



# THE BUILDING ELEMENTS



1 Commercial Area (Shops, F&B, Retail, Pharmacy)

2 Administration Offices

3 Clinics Starting from 57 m<sup>2</sup>

4 Plaza and open space Around 4200 m<sup>2</sup>

5 Serviced Apartments / Studios

6 Conference Center and Meeting rooms

7 Underground Parking



# BUILDING FACILITIES



**Spa**



**Sky Lounge**

# BUILDING FACILITIES



# BUILDING FACILITIES



**Conference Room**



**Solar Cells**

# BUILDING FACILITIES

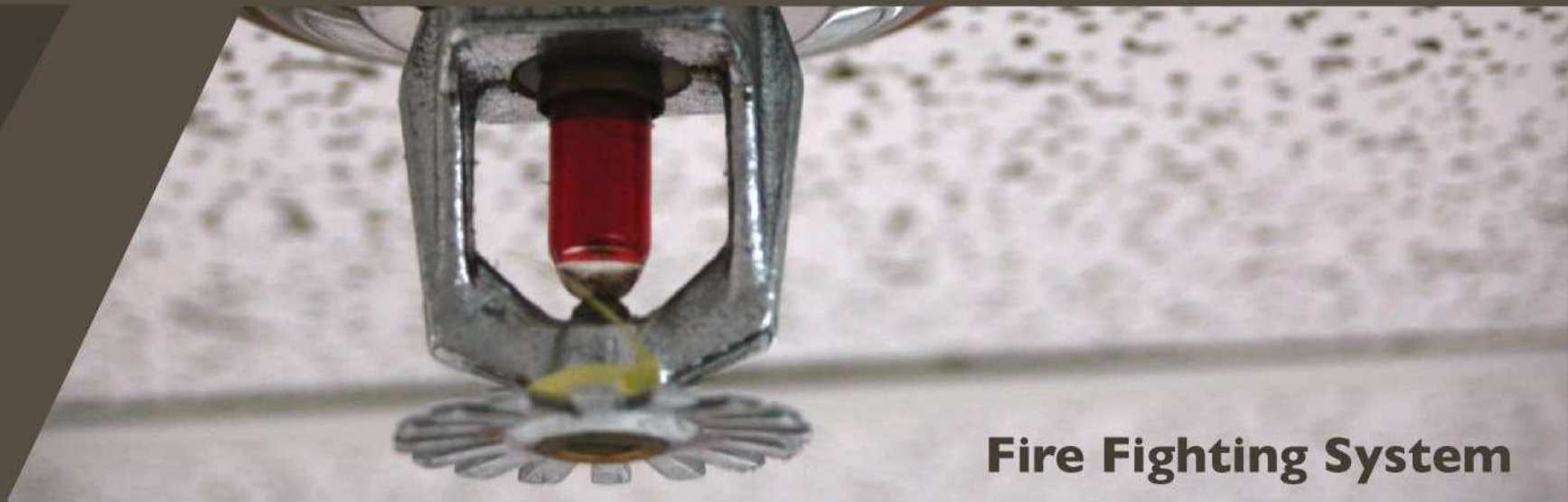


**Security & Surveillance System**



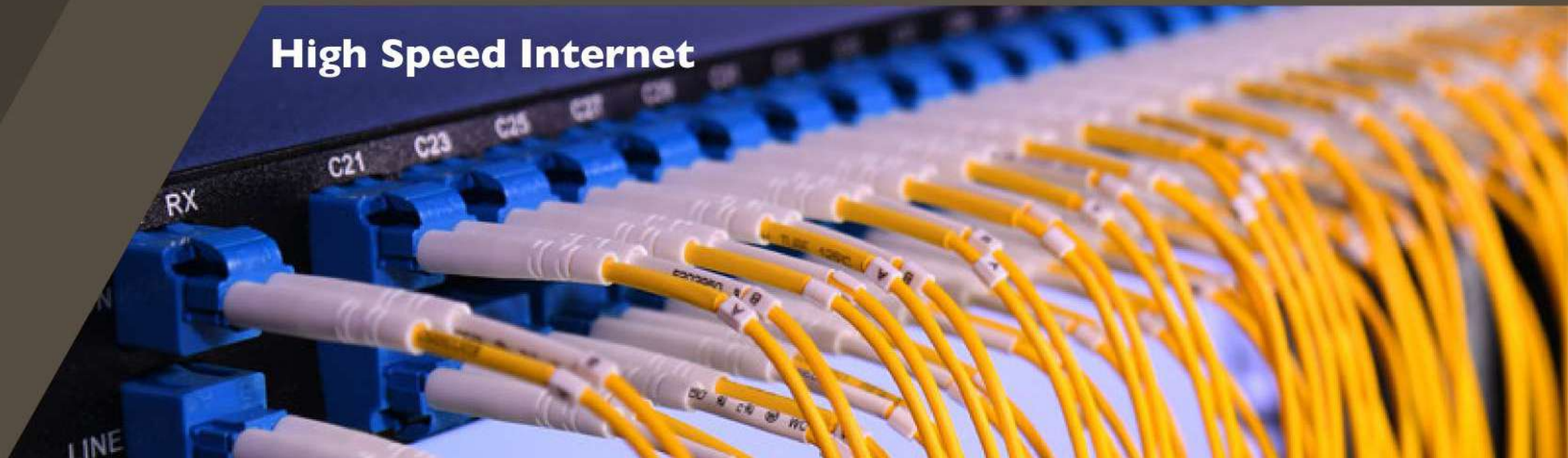
**Business Lounge**

# BUILDING FACILITIES



**Fire Fighting System**

**High Speed Internet**



# BUILDING FACILITIES



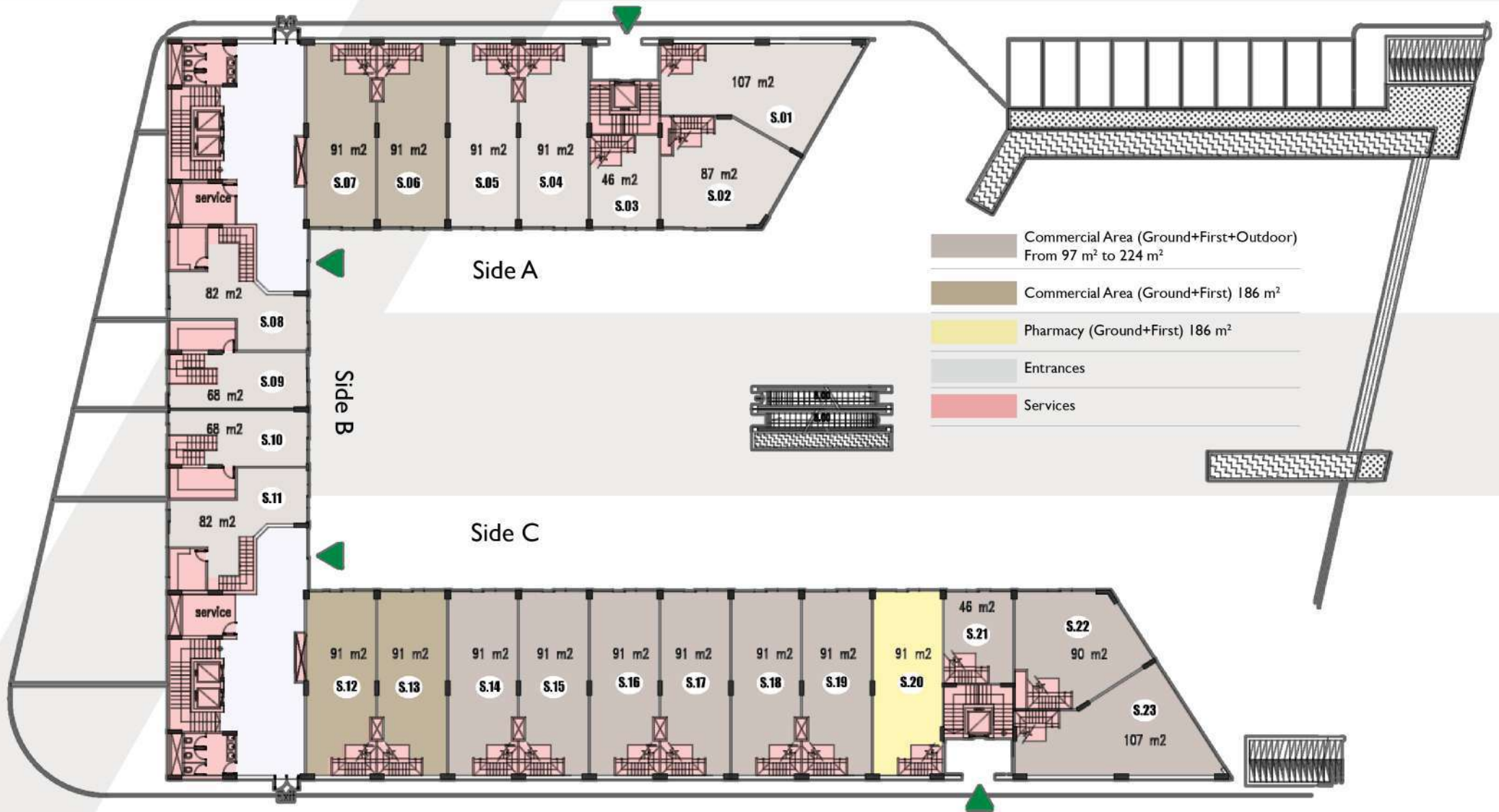
**Electricity Generator**

**Central AC/s (VRV System or Equivelant)**

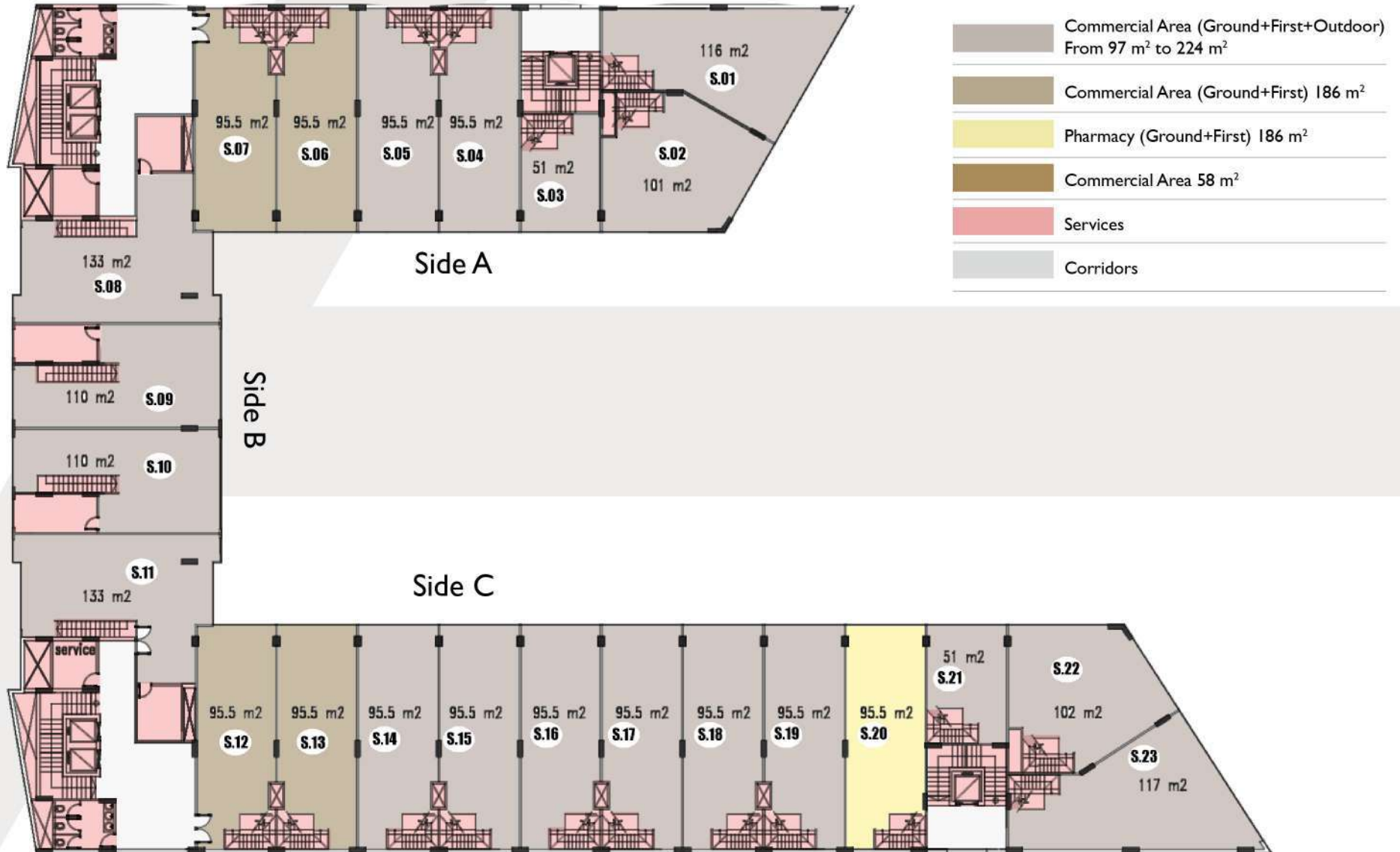




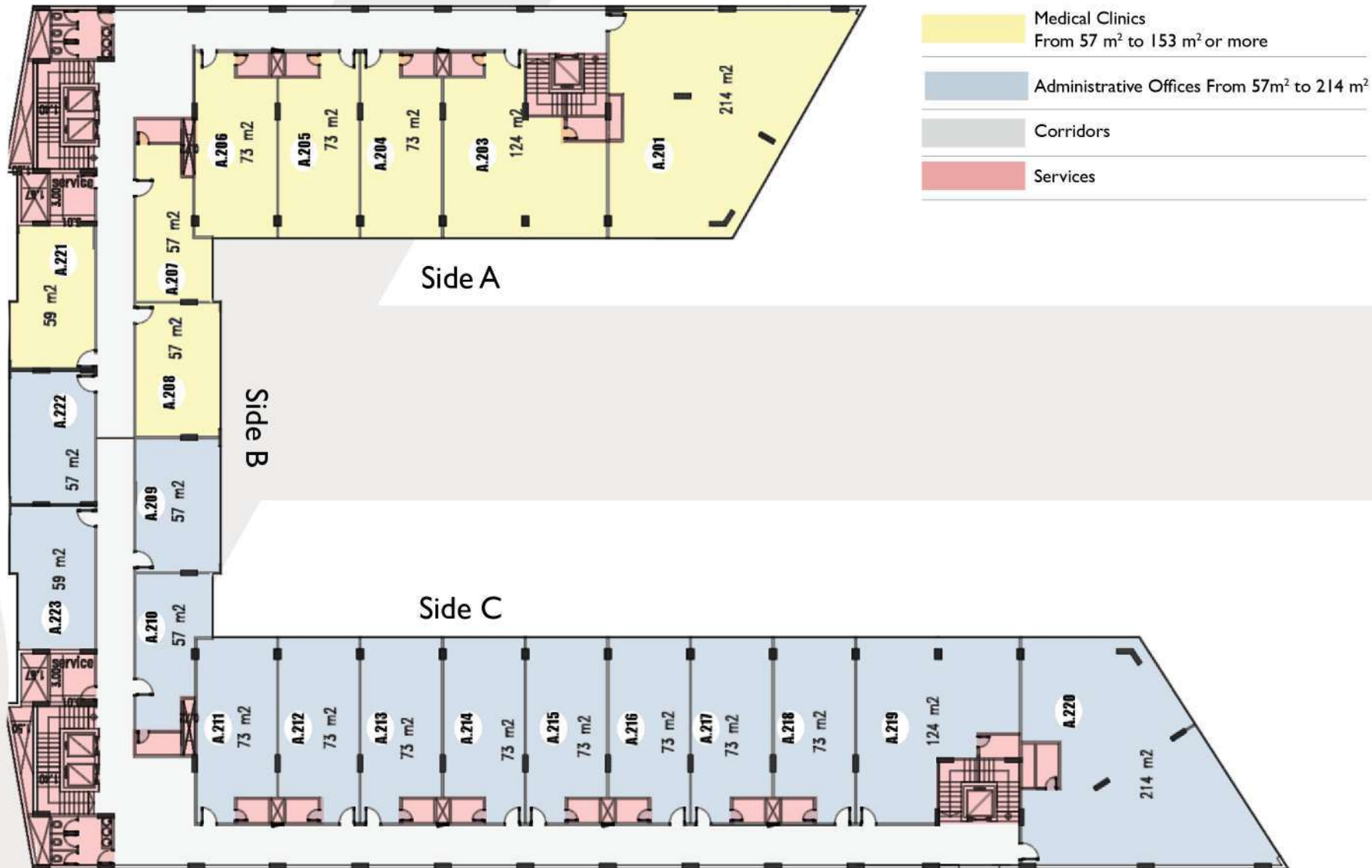
# GROUND FLOOR



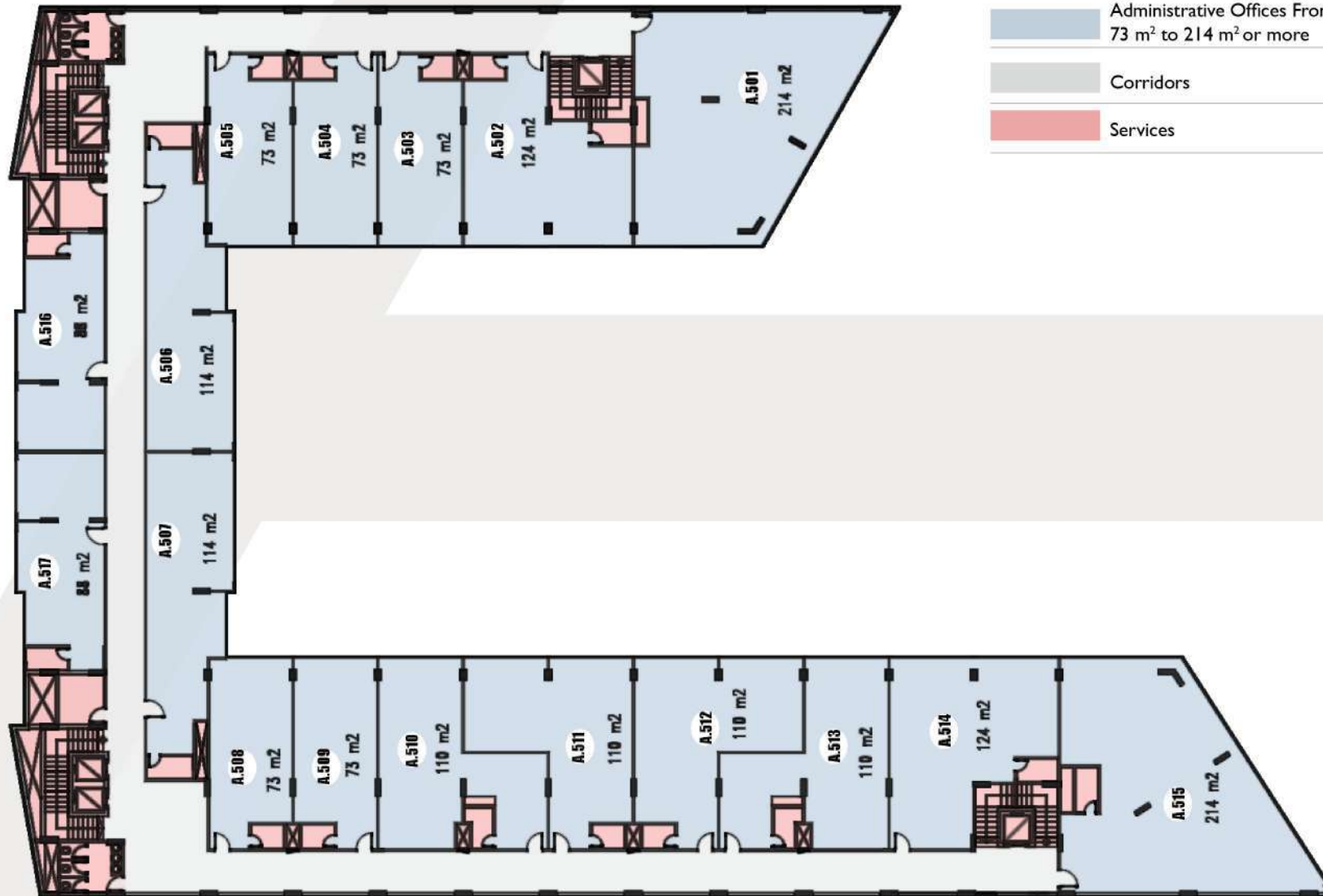
# FIRST FLOOR



# TYPICAL FLOOR SECOND/ THIRD/FOURTH



# FIFTH FLOOR

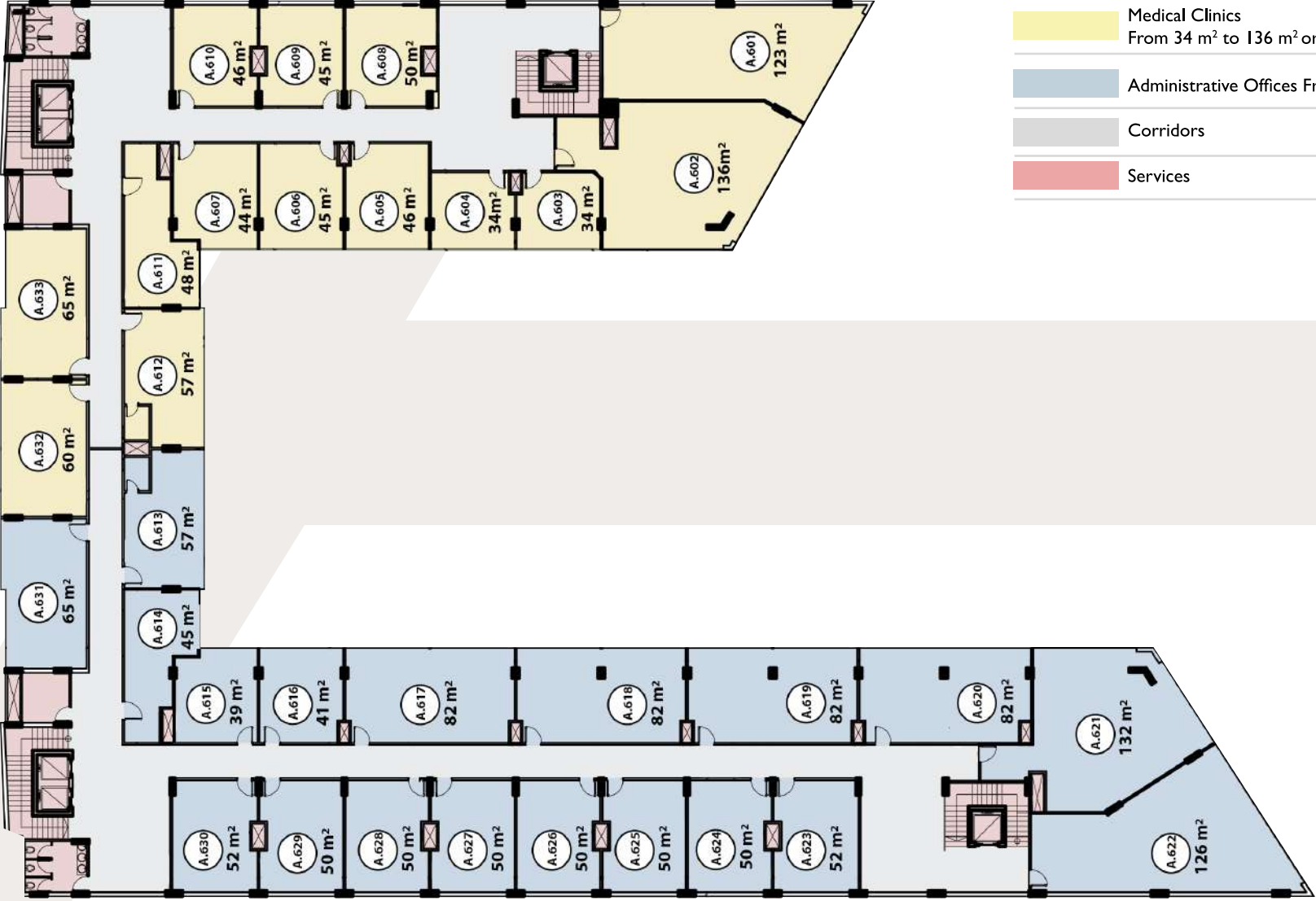


Administrative Offices From  
73 m<sup>2</sup> to 214 m<sup>2</sup> or more

Corridors

Services

# SIXTH FLOOR



- Medical Clinics  
From 34 m<sup>2</sup> to 136 m<sup>2</sup> or more
- Administrative Offices From 39 m<sup>2</sup> to 132 m<sup>2</sup>
- Corridors
- Services





**Hotline** 19241



**Facebook** Ivory Plaza New Capital



**Address** 31 Omar Bakir, Arabisc Tower, Office 202, Heliopolis, Cairo



**Website** [www.ivory-plaza.com](http://www.ivory-plaza.com)